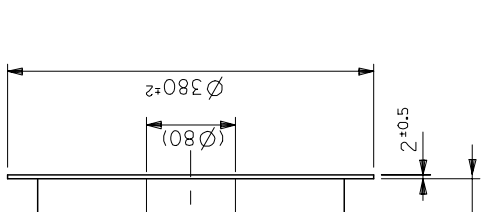
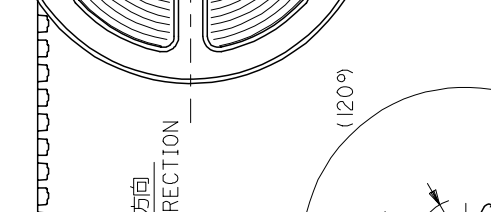
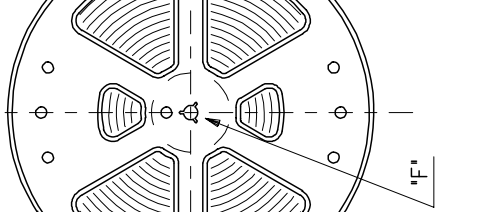


3. トップテープの剥離強度: 0.6±0.35N(60±35gf) (剥離方向は下図参照)
 PEELING OFF FORCE OF TOP TAPE: 0.6±0.35N(60±35gf)
 (PEELING DIRECTION IS SHOWN IN FOLLOWING FIG.)
 <剥離速度: 300mm/min (参考)>
 PEELING SPEED: 300mm/min (REFERENCE)



4. 53398-***10 の詳細寸法については図面SD-53398-***10 を参照下さい。
 RE DETAILED DIMENSIONS, SEE SD-53398-***10.

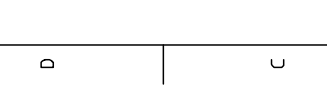
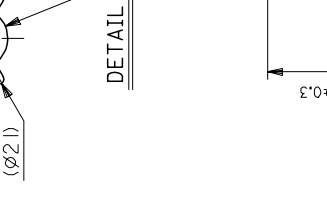
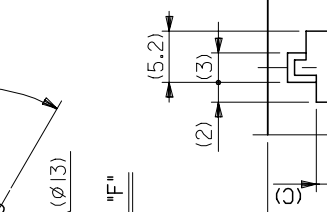
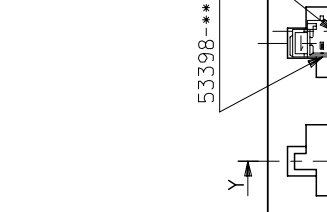
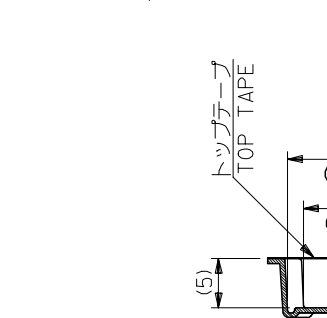
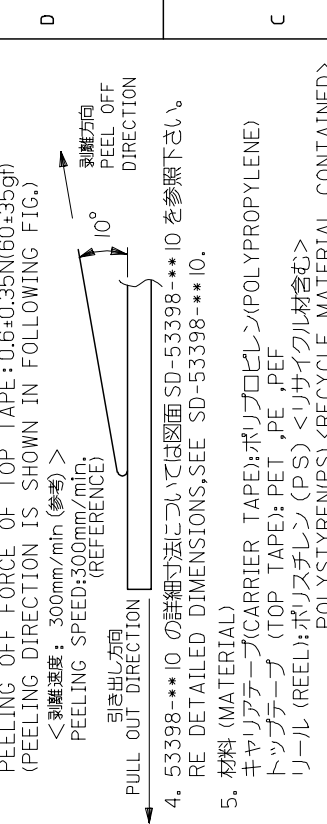
5. 材料 (MATERIAL)
 キャリアテープ (CARRIER TAPE): ポリプロピレン (POLYPROPYLENE)
 トップテープ (TOP TAPE): PET, PE, PEF
 リール (REEL): ポリスチレン (PS) <リサイクル材含む>
 POLYSTYRENE (PS) <RECYCLE MATERIAL CONTAINED>



キヤリアテープ幅 CARRIER TAPE WIDTH	SCALE	DESIGN UNITS	THIRD ANGLE PROJECTION
16	---	METRIC	◎
キヤリアテープ幅 CARRIER TAPE WIDTH	3.7	9.5	5.8
	2.45	8.25	4.55
D	(C)	(B)	(A)
ENG. NO.	53398-0390		
種数 CKT.	53398-0290		

1. 梱包数量: 1000個/リール
 NUMBER OF CONNECTOR: 1000PCS/REEL
 2. リードテープ長さ
 LEAD TAPE LENGTH
 トップテープ未接着部
 TOP TAPE
 NON-BONDED PART
 2.5±1.0
 空インボス 20~25PCS.
 NUMBER OF EMPTY PART
 部品挿入部
 COMPONENT
 SUPPLIER
 末端部
 (空部)
 TAIL PART
 (EMPTY)
 360±35
 480±80

NOTES



GENERAL TOLERANCES (UNLESS SPECIFIED)	REVISION	DESCRIPTION
10 UNDER ±0.2	F	REVISED
10 OVER ±0.25		FC NO.
30 OVER ±0.3		DRWNG: KERRI GUCH
ANGULAR ±3		CHKD: K. ASAKAW
DRAFT WHERE APPLICABLE MUST REMAIN WITHIN DIMENSIONS		APP: S. CHIKAW
		2004/10/28
		2004/10/28
		2004/10/28

MM ONLY	SCALE	DESIGN UNITS	THIRD ANGLE PROJECTION
---	METRIC	◎	
DRAWN BY	TITLE		
K. TOJO	1.25 W/B CONN. WAFER		
CHECKED BY	ASS'Y FOR SMT.		
YAMAGUCHI	EMBOSSD TAPE PACKAGE		
APPROVED BY	MOLEX INCORPORATED		
FUKUSHIMI	DOCUMENT NO.		
	SD-53398-***90		
MATERIAL NO.	SHEET NO.		
	1 OF 3		

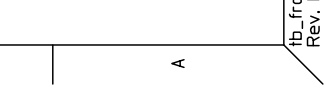
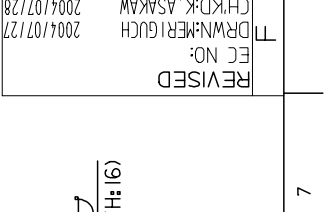
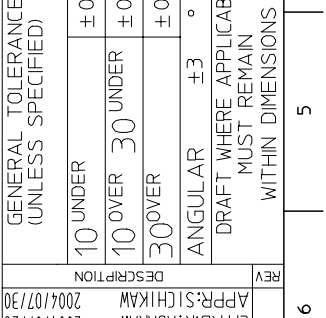
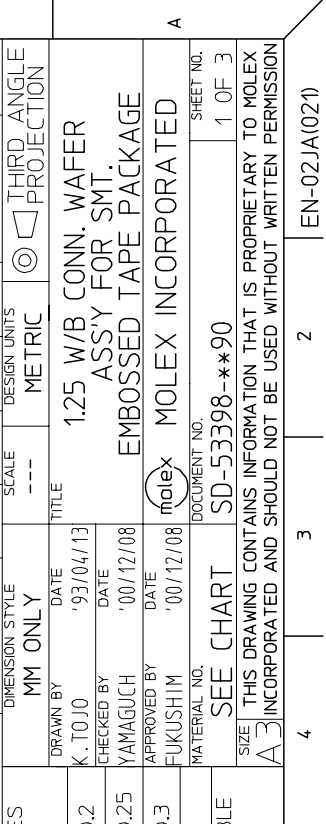
SEE CHART

THIS DRAWING CONTAINS INFORMATION THAT IS PROPRIETARY TO MOLEX INCORPORATED AND SHOULD NOT BE USED WITHOUT WRITTEN PERMISSION

1.6幅テープ
 (TAPE WIDTH: 16)

16

1.75±0.1
 0.79
 1.5±0.1
 12±0.1
 4
 0.2
 累積ピッチ 40±0.2
 ACCUMULATIVE PITCH 40±0.2
 真空ノズル中心位置
 VACUUM PENCIL CENTER LOCATION
 53398-***10
 TOP TAPE
 10 UNDER ±0.2
 10 OVER ±0.25
 30 OVER ±0.3
 ANGULAR ±3
 DRAFT WHERE APPLICABLE
 MUST REMAIN
 WITHIN DIMENSIONS



MM ONLY	SCALE	DESIGN UNITS	THIRD ANGLE PROJECTION
---	METRIC	◎	
DRAWN BY	TITLE		
K. TOJO	1.25 W/B CONN. WAFER		
CHECKED BY	ASS'Y FOR SMT.		
YAMAGUCHI	EMBOSSD TAPE PACKAGE		
APPROVED BY	MOLEX INCORPORATED		
FUKUSHIMI	DOCUMENT NO.		
	SD-53398-***90		
MATERIAL NO.	SHEET NO.		
	1 OF 3		

SEE CHART

THIS DRAWING CONTAINS INFORMATION THAT IS PROPRIETARY TO MOLEX INCORPORATED AND SHOULD NOT BE USED WITHOUT WRITTEN PERMISSION

1.6幅テープ
 (TAPE WIDTH: 16)

16

1.75±0.1
 0.79
 1.5±0.1
 12±0.1
 4
 0.2
 累積ピッチ 40±0.2
 ACCUMULATIVE PITCH 40±0.2
 真空ノズル中心位置
 VACUUM PENCIL CENTER LOCATION
 53398-***10
 TOP TAPE
 10 UNDER ±0.2
 10 OVER ±0.25
 30 OVER ±0.3
 ANGULAR ±3
 DRAFT WHERE APPLICABLE
 MUST REMAIN
 WITHIN DIMENSIONS

16

1.75±0.1
 0.79
 1.5±0.1
 12±0.1
 4
 0.2
 累積ピッチ 40±0.2
 ACCUMULATIVE PITCH 40±0.2
 真空ノズル中心位置
 VACUUM PENCIL CENTER LOCATION
 53398-***10
 TOP TAPE
 10 UNDER ±0.2
 10 OVER ±0.25
 30 OVER ±0.3
 ANGULAR ±3
 DRAFT WHERE APPLICABLE
 MUST REMAIN
 WITHIN DIMENSIONS

16

1.75±0.1
 0.79
 1.5±0.1
 12±0.1
 4
 0.2
 累積ピッチ 40±0.2
 ACCUMULATIVE PITCH 40±0.2
 真空ノズル中心位置
 VACUUM PENCIL CENTER LOCATION
 53398-***10
 TOP TAPE
 10 UNDER ±0.2
 10 OVER ±0.25
 30 OVER ±0.3
 ANGULAR ±3
 DRAFT WHERE APPLICABLE
 MUST REMAIN
 WITHIN DIMENSIONS

16

1.75±0.1
 0.79
 1.5±0.1
 12±0.1
 4
 0.2
 累積ピッチ 40±0.2
 ACCUMULATIVE PITCH 40±0.2
 真空ノズル中心位置
 VACUUM PENCIL CENTER LOCATION
 53398-***10
 TOP TAPE
 10 UNDER ±0.2
 10 OVER ±0.25
 30 OVER ±0.3
 ANGULAR ±3
 DRAFT WHERE APPLICABLE
 MUST REMAIN
 WITHIN DIMENSIONS

16

1.75±0.1
 0.79
 1.5±0.1
 12±0.1
 4
 0.2
 累積ピッチ 40±0.2
 ACCUMULATIVE PITCH 40±0.2
 真空ノズル中心位置
 VACUUM PENCIL CENTER LOCATION
 53398-***10
 TOP TAPE
 10 UNDER ±0.2
 10 OVER ±0.25
 30 OVER ±0.3
 ANGULAR ±3
 DRAFT WHERE APPLICABLE
 MUST REMAIN
 WITHIN DIMENSIONS

16

1.75±0.1
 0.79
 1.5±0.1
 12±0.1
 4
 0.2
 累積ピッチ 40±0.2
 ACCUMULATIVE PITCH 40±0.2
 真空ノズル中心位置
 VACUUM PENCIL CENTER LOCATION
 53398-***10
 TOP TAPE
 10 UNDER ±0.2
 10 OVER ±0.25
 30 OVER ±0.3
 ANGULAR ±3
 DRAFT WHERE APPLICABLE
 MUST REMAIN
 WITHIN DIMENSIONS

16

1.75±0.1
 0.79
 1.5±0.1
 12±0.1
 4
 0.2
 累積ピッチ 40±0.2
 ACCUMULATIVE PITCH 40±0.2
 真空ノズル中心位置
 VACUUM PENCIL CENTER LOCATION
 53398-***10
 TOP TAPE
 10 UNDER ±0.2
 10 OVER ±0.25
 30 OVER ±0.3
 ANGULAR ±3
 DRAFT WHERE APPLICABLE
 MUST REMAIN
 WITHIN DIMENSIONS

16

1.75±0.1
 0.79
 1.5±0.1
 12±0.1
 4
 0.2
 累積ピッチ 40±0.2
 ACCUMULATIVE PITCH 40±0.2
 真空ノズル中心位置
 VACUUM PENCIL CENTER LOCATION
 53398-***10
 TOP TAPE
 10 UNDER ±0.2
 10 OVER ±0.25
 30 OVER ±0.3
 ANGULAR ±3
 DRAFT WHERE APPLICABLE
 MUST REMAIN
 WITHIN DIMENSIONS

16

1.75±0.1
 0.79
 1.5±0.1
 12±0.1
 4
 0.2
 累積ピッチ 40±0.2
 ACCUMULATIVE PITCH 40±0.2
 真空ノズル中心位置
 VACUUM PENCIL CENTER LOCATION
 53398-***10
 TOP TAPE
 10 UNDER ±0.2
 10 OVER ±0.25
 30 OVER ±0.3
 ANGULAR ±3
 DRAFT WHERE APPLICABLE
 MUST REMAIN
 WITHIN DIMENSIONS

16

1.75±0.1
 0.79
 1.5±0.1
 12±0.1
 4
 0.2
 累積ピッチ 40±0.2
 ACCUMULATIVE PITCH 40±0.2
 真空ノズル中心位置
 VACUUM PENCIL CENTER LOCATION
 53398-***10
 TOP TAPE
 10 UNDER ±0.2
 10 OVER ±0.25
 30 OVER ±0.3
 ANGULAR ±3
 DRAFT WHERE APPLICABLE
 MUST REMAIN
 WITHIN DIMENSIONS

16

1.75±0.1
 0.79
 1.5±0.1
 12±0.1
 4
 0.2
 累積ピッチ 40±0.2
 ACCUMULATIVE PITCH 40±0.2
 真空ノズル中心位置
 VACUUM PENCIL CENTER LOCATION
 53398-***10
 TOP TAPE
 10 UNDER ±0.2
 10 OVER ±0.25
 30 OVER ±0.3
 ANGULAR ±3
 DRAFT WHERE APPLICABLE
 MUST REMAIN
 WITHIN DIMENSIONS

16

1.75±0.1
 0.79
 1.5±0.1
 12±0.1
 4
 0.2
 累積ピッチ 40±0.2
 ACCUMULATIVE PITCH 40±0.2
 真空ノズル中心位置
 VACUUM PENCIL CENTER LOCATION
 53398-***10
 TOP TAPE
 10 UNDER ±0.2
 10 OVER ±0.25
 30 OVER ±0.3
 ANGULAR ±3
 DRAFT WHERE APPLICABLE
 MUST REMAIN
 WITHIN DIMENSIONS

16

1.75±0.1
 0.79
 1.5±0.1
 12±0.1
 4
 0.2
 累積ピッチ 40±0.2
 ACCUMULATIVE PITCH 40±0.2
 真空ノズル中心位置
 VACUUM PENCIL CENTER LOCATION
 53398-***10
 TOP TAPE
 10 UNDER ±0.2
 10 OVER ±0.25
 30 OVER ±0.3
 ANGULAR ±3
 DRAFT WHERE APPLICABLE
 MUST REMAIN
 WITHIN DIMENSIONS

16

1.75±0.1
 0.79
 1.5±0.1
 12±0.1
 4
 0.2
 累積ピッチ 40±0.2
 ACCUMULATIVE PITCH 40±0.2
 真空ノズル中心位置
 VACUUM PENCIL CENTER LOCATION
 53398-***10
 TOP TAPE
 10 UNDER ±0.2
 10 OVER ±0.25
 30 OVER ±0.3
 ANGULAR ±3
 DRAFT WHERE APPLICABLE
 MUST REMAIN
 WITHIN DIMENSIONS

16

1.75±0.1
 0.79
 1.5±0.1
 12±0.1
 4
 0.2
 累積ピッチ 40±0.2
 ACCUMULATIVE PITCH 40±0.2
 真空ノズル中心位置
 VACUUM PENCIL CENTER LOCATION
 53398-***10
 TOP TAPE
 10 UNDER ±0.2
 10 OVER ±0.25
 30 OVER ±0.3
 ANGULAR ±3
 DRAFT WHERE APPLICABLE
 MUST REMAIN
 WITHIN DIMENSIONS

16

1.75±0.1
 0.79
 1.5±0.1
 12±0.1
 4
 0.2
 累積ピッチ 40±0.2
 ACCUMULATIVE PITCH 40±0.2
 真空ノズル中心位置
 VACUUM PENCIL CENTER LOCATION
 53398-***10
 TOP TAPE
 10 UNDER ±0.2
 10 OVER ±0.25
 30 OVER ±0.3
 ANGULAR ±3
 DRAFT WHERE APPLICABLE
 MUST REMAIN
 WITHIN DIMENSIONS

16

1.75±0.1
 0.79
 1.5±0.1
 12±0.1
 4
 0.2
 累積ピッチ 40±0.2
 ACCUMULATIVE PITCH 40±0.2
 真空ノズル中心位置
 VACUUM PENCIL CENTER LOCATION
 53398-***10
 TOP TAPE
 10 UNDER ±0.2
 10 OVER ±0.25
 30 OVER ±0.3
 ANGULAR ±3
 DRAFT WHERE APPLICABLE
 MUST REMAIN
 WITHIN DIMENSIONS

16

1.75±0.1
 0.79
 1.5±0.1
 12±0.1
 4
 0.2
 累積ピッチ 40±0.2
 ACCUMULATIVE PITCH 40±0.2
 真空ノズル中心位置
 VACUUM PENCIL CENTER LOCATION
 53398-***10
 TOP TAPE
 10 UNDER ±0.2
 10 OVER ±0.25
 30 OVER ±0.3
 ANGULAR ±3
 DRAFT WHERE APPLICABLE
 MUST REMAIN
 WITHIN DIMENSIONS

16

1.75±0.1
 0.79
 1.5±0.1
 12±0.1
 4
 0.2
 累積ピッチ 40±0.2
 ACCUMULATIVE PITCH 40±0.2
 真空ノズル中心位置
 VACUUM PENCIL CENTER LOCATION
 53398-***10
 TOP TAPE
 10 UNDER ±0.2
 10 OVER ±0.25
 30 OVER ±0.3
 ANGULAR ±3
 DRAFT WHERE APPLICABLE
 MUST REMAIN
 WITHIN DIMENSIONS

16

1.75±0.1
 0.79
 1.5±0.1
 12±0.1
 4
 0.2
 累積ピッチ 40±0.2
 ACCUMULATIVE PITCH 40±0.2
 真空ノズル中心位置
 VACUUM PENCIL CENTER LOCATION
 53398-***10
 TOP TAPE
 10 UNDER ±0.2
 10 OVER ±0.25
 30 OVER ±0.3
 ANGULAR ±3
 DRAFT WHERE APPLICABLE
 MUST REMAIN
 WITHIN DIMENSIONS

16

1.75±0.1
 0.79
 1.5±0.1
 12±0.1
 4
 0.2
 累積ピッチ 40±0.2
 ACCUMULATIVE PITCH 40±0.2
 真空ノズル中心位置
 VACUUM PENCIL CENTER LOCATION
 53398-***10
 TOP TAPE
 10 UNDER ±0.2
 10 OVER ±0.25
 30 OVER ±0.3
 ANGULAR ±3
 DRAFT WHERE APPLICABLE
 MUST REMAIN
 WITHIN DIMENSIONS

16

1.75±0.1
 0.79
 1.5±0.1
 12±0.1
 4
 0.2
 累積ピッチ 40±0.2
 ACCUMULATIVE PITCH 40±0.2
 真空ノズル中心位置
 VACUUM PENCIL CENTER LOCATION
 53398-***10
 TOP TAPE
 10 UNDER ±0.2
 10 OVER ±0.25
 30 OVER ±0.3
 ANGULAR ±3
 DRAFT WHERE APPLICABLE
 MUST REMAIN
 WITHIN DIMENSIONS

16

1.75±0.1
 0.79
 1.5±0.1
 12±0.1
 4
 0.2
 累積ピッチ 40±0.2
 ACCUMULATIVE PITCH 40±0.2
 真空ノズル中心位置
 VACUUM PENCIL CENTER LOCATION
 53398-***10
 TOP TAPE
 10 UNDER ±0.2
 10 OVER ±0.25
 30 OVER ±0.3
 ANGULAR ±3
 DRAFT WHERE APPLICABLE
 MUST REMAIN
 WITHIN DIMENSIONS

16

1.75±0.1
 0.79
 1.5±0.1
 12±0.1
 4
 0.2
 累積ピッチ 40±0.2
 ACCUMULATIVE PITCH 40±0.2
 真空ノズル中心位置
 VACUUM PENCIL CENTER LOCATION
 53398-***10
 TOP TAPE
 10 UNDER ±0.2
 10 OVER ±0.25
 30 OVER ±0.3
 ANGULAR ±3
 DRAFT WHERE APPLICABLE
 MUST REMAIN
 WITHIN DIMENSIONS

16

1.75±0.1
 0.79
 1.5±0.1
 12±0.1
 4
 0.2
 累積ピッチ 40±0.2
 ACCUMULATIVE PITCH 40±0.2
 真空ノズル中心位置
 VACUUM PENCIL CENTER LOCATION
 53398-***10
 TOP TAPE
 10 UNDER ±0.2
 10 OVER ±0.25
 30 OVER ±0.3
 ANGULAR ±3
 DRAFT WHERE APPLICABLE
 MUST REMAIN
 WITHIN DIMENSIONS

16

1.75±0.1
 0.79
 1.5±0.1
 12±0.1
 4
 0.2
 累積ピッチ 40±0.2
 ACCUMULATIVE PITCH 40±0.2
 真空ノズル中心位置
 VACUUM PENCIL CENTER LOCATION
 53398-***10
 TOP TAPE
 10 UNDER ±0.2
 10 OVER ±0.25
 30 OVER ±0.3
 ANGULAR ±3
 DRAFT WHERE APPLICABLE
 MUST REMAIN
 WITHIN DIMENSIONS

16

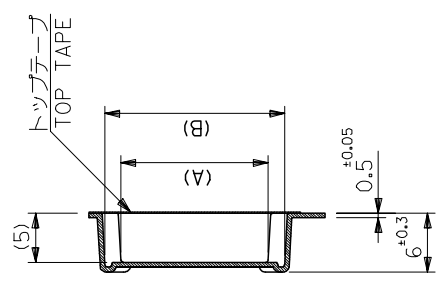
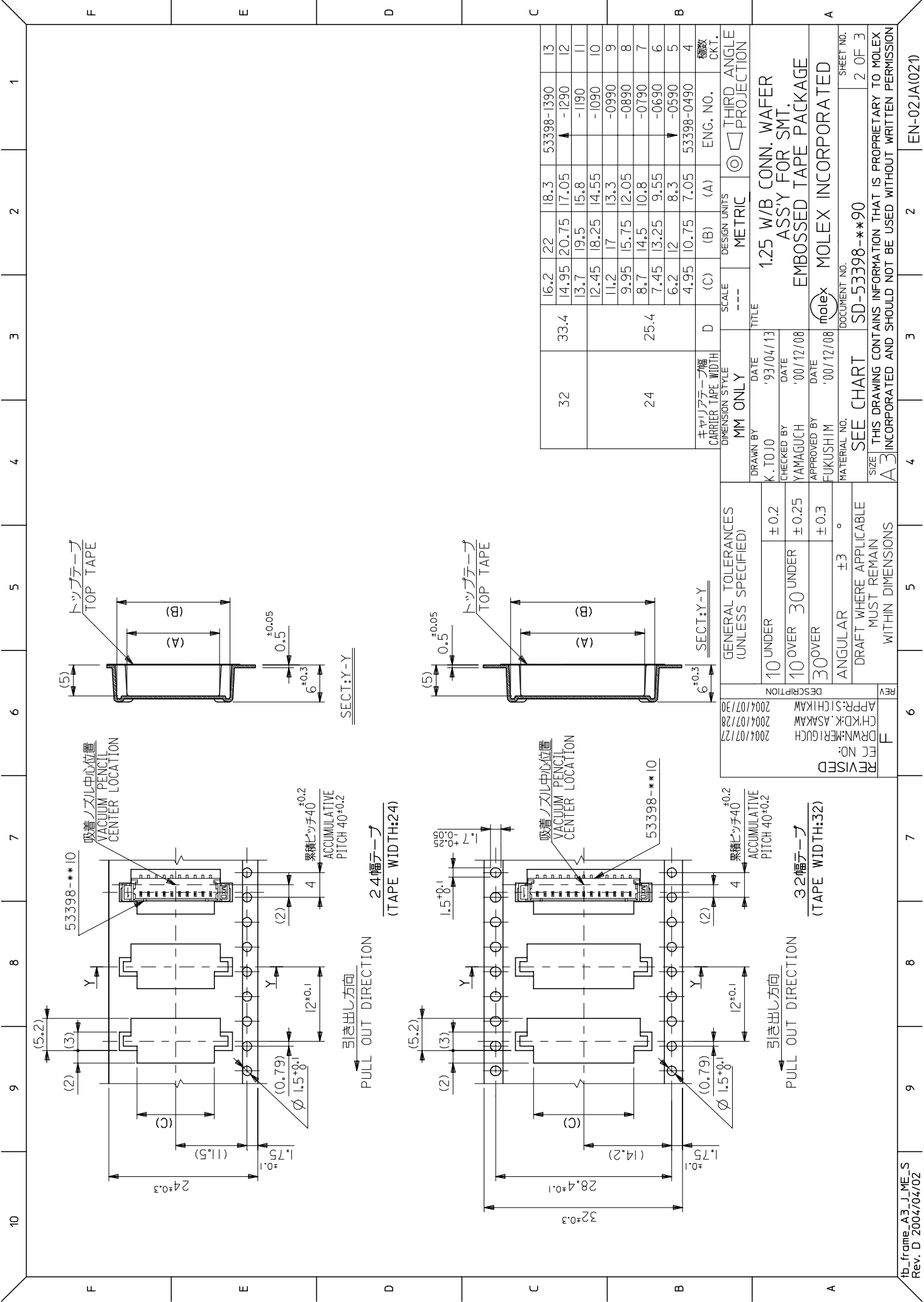
1.75±0.1
 0.79
 1.5±0.1
 12±0.1
 4
 0.2
 累積ピッチ 40±0.2
 ACCUMULATIVE PITCH 40±0.2
 真空ノズル中心位置
 VACUUM PENCIL CENTER LOCATION
 53398-***10
 TOP TAPE
 10 UNDER ±0.2
 10 OVER ±0.25
 30 OVER ±0.3
 ANGULAR ±3
 DRAFT WHERE APPLICABLE
 MUST REMAIN
 WITHIN DIMENSIONS

16

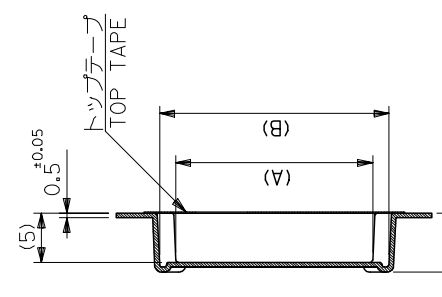
1.75±0.1
 0.79
 1.5±0.1
 12±0.1
 4
 0.2
 累積ピッチ 40±0.2
 ACCUMULATIVE PITCH 40±0.2
 真空ノズル中心位置
 VACUUM PENCIL CENTER LOCATION
 53398-***10
 TOP TAPE
 10 UNDER ±0.2
 10 OVER ±0.25
 30 OVER ±0.3
 ANGULAR ±3
 DRAFT WHERE APPLICABLE
 MUST REMAIN
 WITHIN DIMENSIONS

16

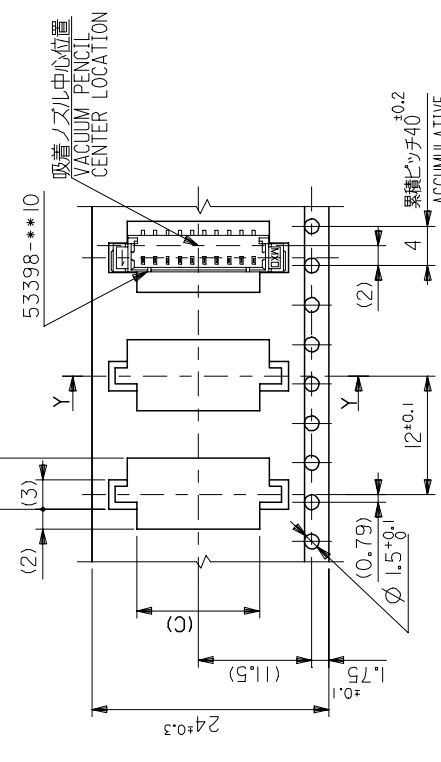
1.75±0.1
 0.79
 1.5±0.1
 12±0.1
 4
 0.2
 累積ピッチ



SECT:Y-Y

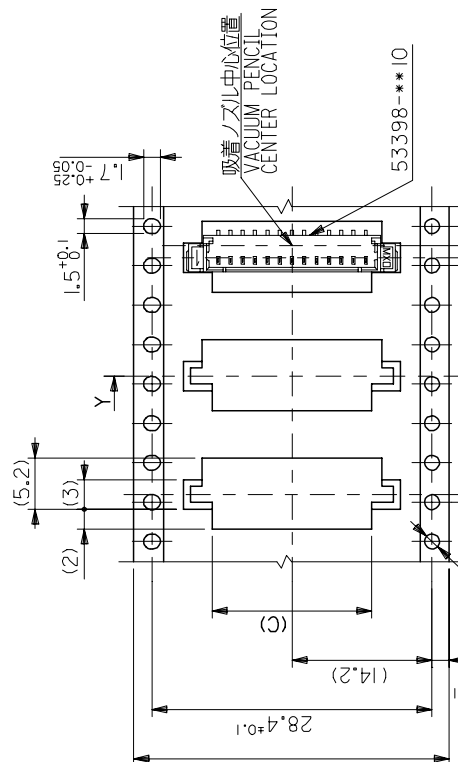


SECT:Y-Y



24ピンテープ
(TAPE WIDTH:24)

引き出し方向
PULL OUT DIRECTION

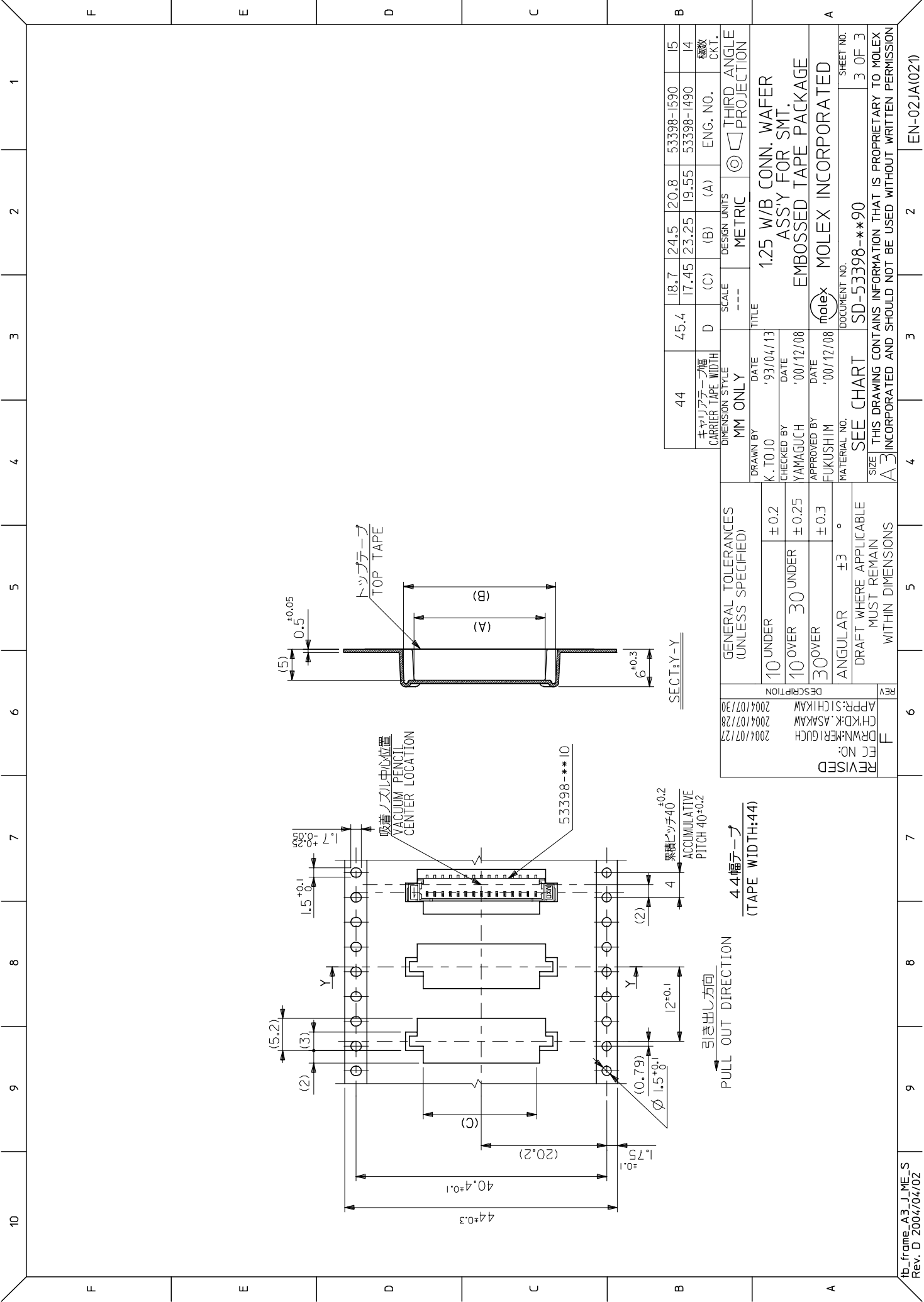


32ピンテープ
(TAPE WIDTH:32)

引き出し方向
PULL OUT DIRECTION

32	33.4	16.2	22	18.3	53398-1390	13
		14.95	20.75	17.05	-1290	12
		13.7	19.5	15.8	-1190	11
		12.45	18.25	14.55	-1090	10
		11.2	17	13.3	-0990	9
		9.95	15.75	12.05	-0890	8
		8.7	14.5	10.8	-0790	7
		7.45	13.25	9.55	-0690	6
		6.2	12	8.3	-0590	5
		4.95	10.75	7.05	53398-0490	4

キャリアテープ幅 CARRIER TAPE WIDTH	D	(C)	(B)	(A)	ENG. NO.	機敏 CKT.
SCALE	---	---	---	---	---	---
DESIGN UNITS	METRIC	METRIC	METRIC	METRIC	METRIC	METRIC
THIRD ANGLE PROJECTION	☉	☉	☉	☉	☉	☉
TITLE	1.25 W/B CONN. WAFER ASS'Y FOR SMT. EMBOSSED TAPE PACKAGE					
DRAWN BY	MM ONLY					
DATE	'93/04/13					
CHECKED BY	YAMAGUCHI					
DATE	'00/12/08					
APPROVED BY	FUKUSHIM					
DATE	'00/12/08					
MATERIAL NO.	MOLEX	MOLEX INCORPORATED				
DOCUMENT NO.	SD-53398-**90					
SEE CHART						
SIZE	THIS DRAWING CONTAINS INFORMATION THAT IS PROPRIETARY TO MOLEX INCORPORATED AND SHOULD NOT BE USED WITHOUT WRITTEN PERMISSION					
SHEET NO.	2 OF 3					



PULL OUT DIRECTION
44幅テープ
(TAPE WIDTH:44)

REV	DESCRIPTION
F	REVISED
	FC NO. 2004/07/27
	DRWNG:KERRI GUCH 2004/07/28
	CHKD:K. ASAKAW 2004/07/28
	APP: S. CHIKAW 2004/07/30

GENERAL TOLERANCES (UNLESS SPECIFIED)	
10 UNDER	±0.2
10 OVER	30 UNDER ±0.25
30 OVER	±0.3
ANGULAR	±3 °
DRAFT WHERE APPLICABLE MUST REMAIN WITHIN DIMENSIONS	

MM ONLY	SCALE	DESIGN UNITS	THIRD ANGLE PROJECTION
44	---	METRIC	☉
キャリアテープ幅 CARRIER TAPE WIDTH	D	(A)	ENG. NO.
DRAWN BY	DATE	TITLE	1.25 W/B CONN. WAFER ASS'Y FOR SMT.
K. TOJO	'93/04/13		EMBOSSSED TAPE PACKAGE
CHECKED BY	DATE		MOLEX INCORPORATED
YAMAGUCHI	'00/12/08		DOCUMENT NO. SD-53398-**-90
APPROVED BY	DATE		SHEET NO. 3 OF 3
FUKUSHIM	'00/12/08		